

[How to] PRINT WITH WHITE INK

Using white ink effectively can give you dramatic visual effects - and no other printer does it as well as the versatile UCJV300 Series. In this guide, you'll learn how to use white ink to create amazing results.

PRINTER: UCJV300-130

RASTERLINK VERSION: 2.1

MEDIA: Arlon 3200 Premium Overlamine

PROFILE:

TYPE: Full Color

PASSES: 12

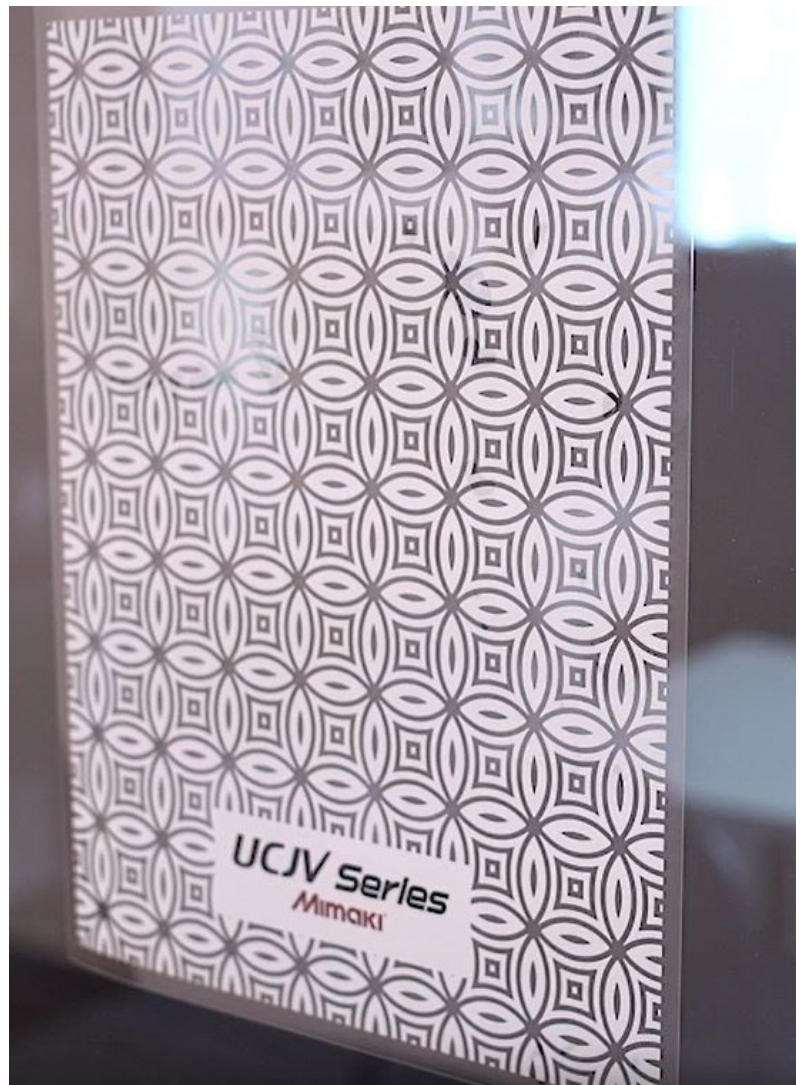
OVERPRINT: 1

RESOLUTION: 300x900

INK: LUS 200

INK CONFIGURATION: CMYK + CMYK + W W

AMOUNT OF INK USED: 1.292cc



Preparation Tools: Microfiber Cloth and Glass Cleaner

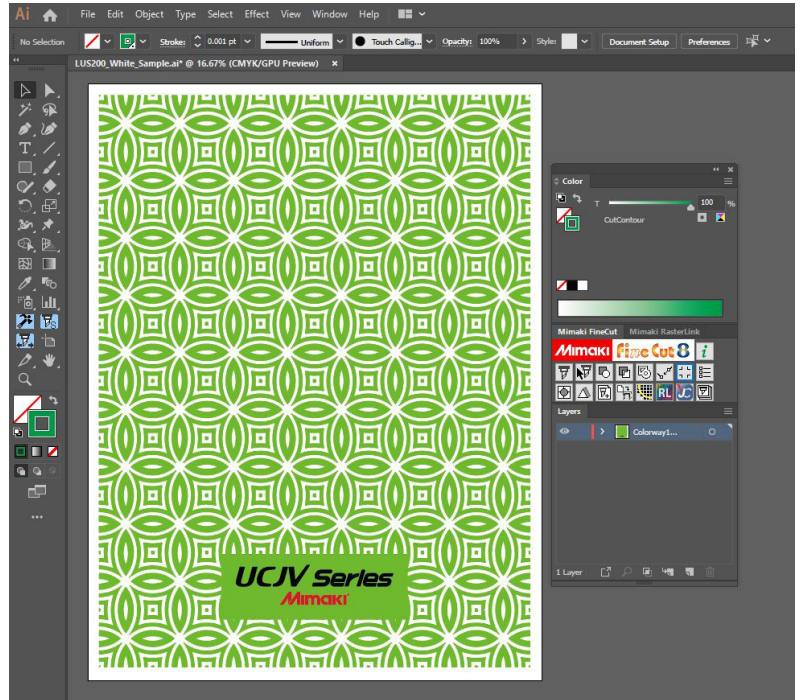
Profiles can be downloaded through the profile update tool in RasterLink or manually on the product pages found at www.mimaki.com



STEP 01: DATA CREATION

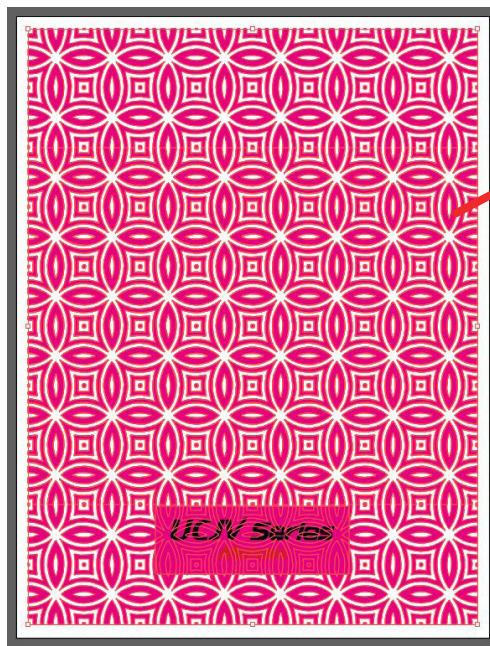
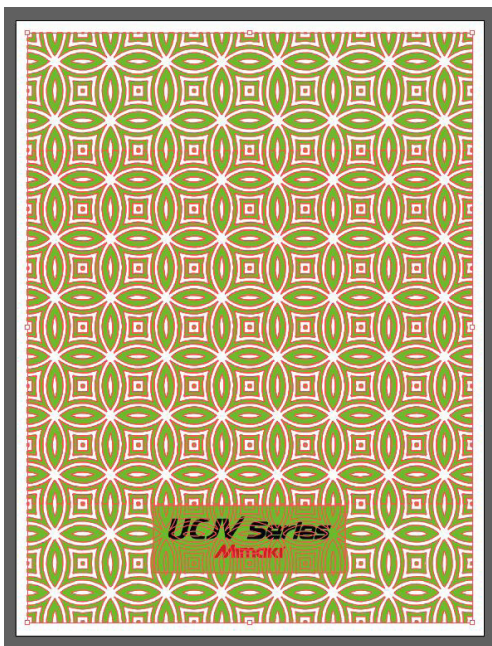
1.1 Create an Illustrator Document

- Create your document and artboard to your preferred size. For this particular design we've used 24x31 inches.
- Load a design into the file and arrange it inside the artboard.



1.2 Create a "White Layer"

- Create or move all the vector objects that will be printed with white ink to a new layer.
- Select all the objects.
- Assign the objects a single CMYK color that will be replaced.



For this example, all the white ink objects will be assigned 100% magenta

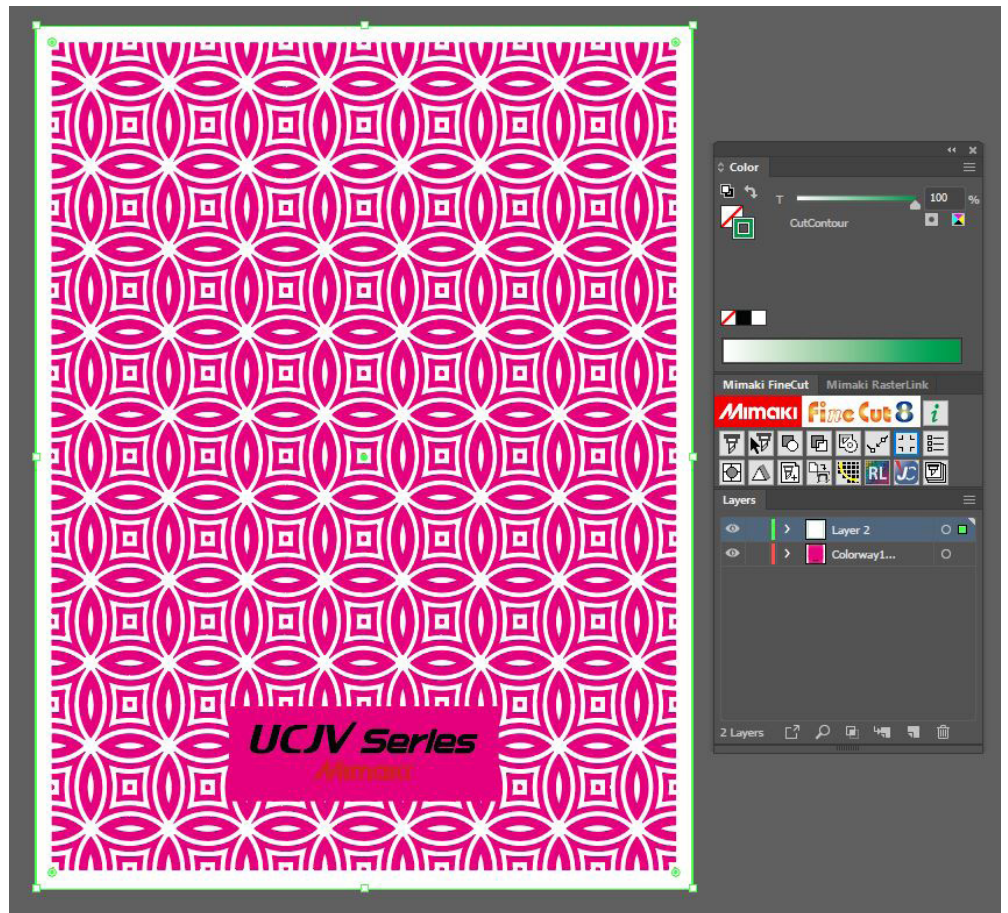
1.3 Creating a Cut Line

- Create a path around the outside of your artboard. This will serve as your Half-Cut line
- Select your path and use the Mimaki RasterLink Tools to register the path as Mimaki cut lines.

1.4 Save your work

- You should now have a graphic with:
 - Sized artboard
 - Cut lines
 - A layer for white objects
- Save all the layers as an EPS file.

NOTE: Any paths can be converted to cut lines with RasterLink Tools and should have a stroke color named CutContour.



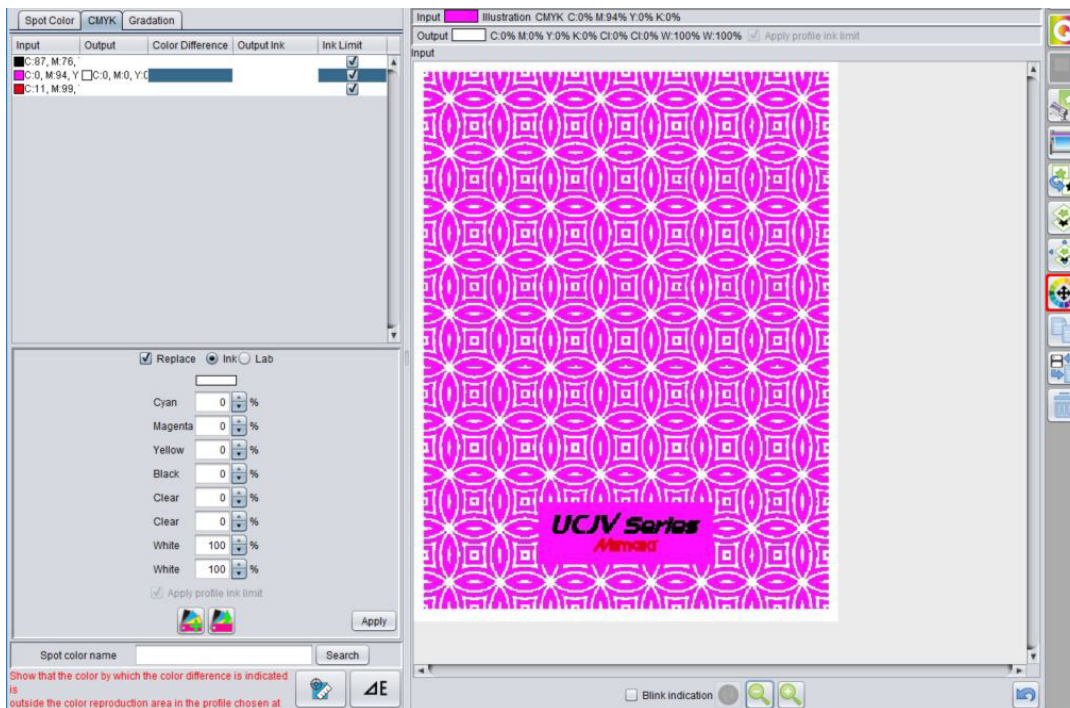
STEP 02: RASTERLINK SETTINGS

2.1 Upload Files to Rasterlink

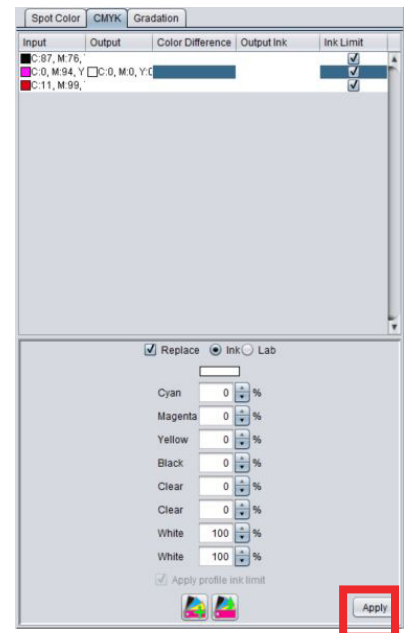
- Load your files into Rasterlink

2.2 Call Out White Section of The Print

- Click the color replacement tool in the RasterLink toolbar and select the colors to be replaced in the preview window.
- For this example, we intend for everything Magenta to print as white, so we are assigning 100% for all available white inks channels.



NOTE: You can adjust these settings as desired.



2.3 Setup

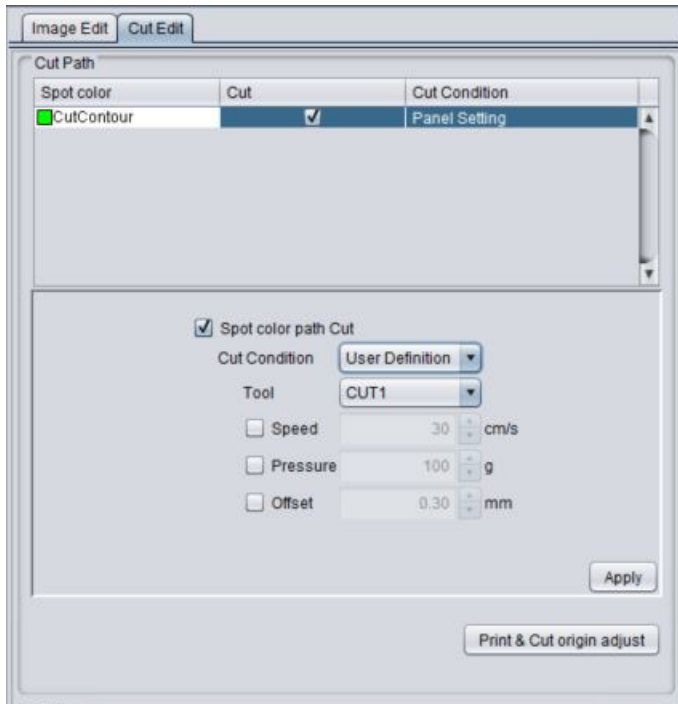
- Go to the General Print Section to align your artwork on the media.
- Scale your image to the size you need your graphic to be.
- Here you can align your object to the material and create any copies.

Click "Apply" to make sure your changes take effect



2.4 Rasterlink Cut Settings

- In the General Print tool section select the “Cut Edit” tab and select your CutContour path to assign it a Half Cut.
- In “Cut Condition” change the Panel Settings to “User Definition” then select Cut 1 then select Apply



NOTE: The Half Cut function must be activated on the printer for the Cut 1 condition

STEP 03: APPLICATION

3.1 Setup

- Click the general print tool on the Rasterlink toolbar.

3.2 Print

- Choose the execution tool in the RasterLink toolbar.
- Select print and cut from the dropdown, and click start to send the file to the printer.

3.3 Application

- Wash and wipe down a glass wall or surface with a microfiber cloth
- Peel the graphic and place it from one corner to the next, smoothing all bubbles during the application.